



**Mount  
Sinai  
South  
Nassau**



MIKE LUKOVICH © AF-ONE 3-19-20

Vol. 1. Issue 11

## Update on Coronavirus

**Mount Sinai South Nassau  
COVID-19 Data Dashboard**

**101**

**Confirmed or Suspected COVID-19 patients currently in house**

**789**

**COVID-19 patients discharged HOME**

**19**

**Ventilated COVID-19 Patients**

as of May 7, 2020



Honoring the bravery of our Nurses

## Saluting our Front Line Mount Sinai South Nassau's Nurse Heroes!



During National Nurses Week, May 6 – 12, Mount Sinai South Nassau continues to shine a light on the bravery of our front line nursing staff. Our nurses have risked their own personal safety to deliver care during the life and death struggle against COVID-19. Mount Sinai South Nassau's 1,000 nurses took a moment to encourage and humorously recognize their colleagues with a series of short TikTok videos.

**View the videos here:**



---

## **Mount Sinai South Nassau Transitions Back to More Normal Operations**

### **Urges Patients: Don't Put Your Health on Hold**

Mount Sinai South Nassau is beginning to return to more normal operations post-COVID-19 and is urging residents to seek treatment for non-COVID-related diseases and medically necessary treatments that they may have put off due to the pandemic.

"We are adjusting to the 'new normal' and that means a hypervigilance on patient safety, cleaning procedures and infection control to ensure patient and staff safety," said Richard J. Murphy, President and CEO of Mount Sinai South Nassau, one of the only hospitals on Long Island to be designated as an Infectious Diseases Society of America Antimicrobial Stewardship Center of Excellence.

"We are hearing from our physicians that some patients put off seeking medically necessary care during the COVID crisis for cardiac, oncology and other medical conditions that now have become more serious," said Adhi Sharma, Mount Sinai South Nassau's Chief Medical Officer and Executive Vice President for Clinical and Professional Affairs. "Those patients may be putting themselves more at risk by staying home and delaying needed treatment."

Patients visiting the hospital for any procedure, oncology or infusion treatment or surgery will be required to undergo pre-procedure COVID-19 testing at a new drive-up COVIDV-19 testing site in the hospital's Washington Ave. parking lot. The test must be performed within 2 days of the procedure.

To learn more about the hospital's transition back to normal operations, [Read here...](#)

---

## **Environmental Services takes extraordinary measures to ensure hospital is scrubbed and sterilized**



All areas that once housed COVID patients, including the Emergency Department and Intensive Care Units, have received a deep cleaning with EPA-approved, hospital-grade sterilization agents. Some areas are also receiving fresh coats of paint and new fixture repairs. All of this is in addition to the regular 24-hour, 7-days a week daily deep-cleaning of the hospital.

---

## Three Mother-Daughter RN Teams Take on COVID-19 Fight Together at Mount Sinai South Nassau



*Mount Sinai South Nassau mother-daughter nurse teams. Photo left, Lori Brady, RN, Cardiac Rehabilitation, and daughter, Carolyn, an Emergency Department RN. Photo center, Teresa Eberhart, RN, Nurse Educator, and daughter, Leanne, an Emergency Department RN. Photo right, Carolyn Engel, RN, Nurse Educator, and daughter, Lauren, a Critical Care Unit RN.*

Lori Brady, Teresa Eberhart, and Carolyn Engel are three RNs fighting COVID-19 on the front lines alongside their Mount Sinai South Nassau “family.” But “family” has taken on new meaning now that the long-time nurses are battling the deadly virus with their daughters, all of whom are RNs.

Cardiac Rehabilitation nurse Lori Brady’s daughter, Carolyn, 25, and Nurse Educator Teresa Eberhart’s daughter, Leanne, 23, both serve in the hospital’s Emergency Department while Nurse Educator Carolyn Engel’s daughter, Lauren, 23, cares for the critically ill in the CCU.



The senior nurses say they are fortunate to be able to visit their daughters during or before their shifts and have the opportunity to share battleground stories with one another. Said Carolyn Brady: "When I have had a tough day, I have my mom to turn to. She comforts me with her 30 years of nursing experience. We can talk to each other because we know what's it's like at the bedside."

## Help support our Front Line Heroes

Mount Sinai South Nassau thanks our nurses for showing up, for stepping up, and for putting our patients above themselves. And we thank them for their dedication and resolve in the face of COVID-19. **Honor a nurse during Nurses' Week with a tax-deductible contribution today!**

Please consider making a tax-deductible donation to Mount Sinai South Nassau's lifesaving COVID-19 Relief Fund right now.

[Donate now...](#)



## Acts of kindness...

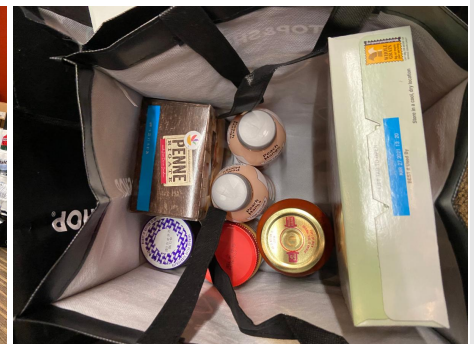
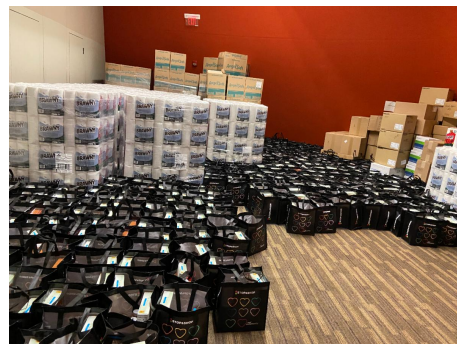
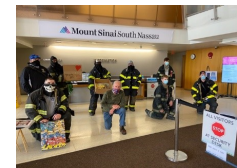


### 'Alexa, Switch Me to Show Mode'

Thank you, Amazon, for delivering 200 of your Alexa Show tablets that will be used to help patients stay in touch with loved ones during no visitor policy.

### Brownies, Cakes, Cookies and Much Gratitude

Freeport Fire Department delivers baked goods for Mount Sinai South Nassau front line staff.



*Stop & Shop donates 18 pallets of toilet paper, paper towels, penne, pasta sauce and peanut butter and jelly to front line staff. In addition to their weekly donations of sandwiches to hospital staff.*

## Feeding Front line Staff

Mount Sinai South Nassau is grateful to Emily McLaughlin, 23, of Seaford, foreground, center, who raised almost \$300 on Facebook and Instagram to



feed front-line staff. Inspired by the medical assistant's generosity, nearly 10 restaurants from Oceanside to Woodbury joined in the effort and donated bagels, sandwiches, smoothies, and snacks.

*A big thank you to our amazing community and all the local businesses for their support during this difficult time. Your donations of food for our hardworking nurses and staff have warmed our hearts and lifted our spirits. We are so grateful. Please continue to support these local businesses who donated to Mount Sinai South Nassau.*

### **Corporate**

[Dunkin Brands](#)  
[Stop & Shop](#)

### **Baldwin**

[Baldwin Harbor Deli](#)  
[Delicious Moments Caterers](#)  
[Sonny's Canal House](#)

### **Bellmore**

[Bellmore Dermatology](#)

### **Cedarhurst**

[Central Perk Cafe](#)

### **East Rockaway**

[Tony D's Pizzeria](#)

### **Far Rockaway**

[Yeshiva Bnei Torah](#)

### **Floral Park**

[Jack Duggan's](#)

### **Freeport**

[The Dover Group](#)  
[Halfway Down](#)  
[Montana Brothers Pizzeria](#)

### **Hewlett**

[Central Perk](#)  
[DaNicola Restaurant](#)  
[Hewlett Frozen Yogurt](#)  
[The Seawane Club](#)

### **Hempstead**

[El Ajicito Peruvian Restaurant](#)

### **Island Park**

[Bridgeview Yacht Club](#)  
[Jack's Pizza](#)  
[Pancho's of Island Park](#)

### **Long Beach**

[Bob's Natural Foods](#)

### **Massapequa**

[Finn's Deli](#)  
[Massapequa Diner](#)  
[Philly Pretzel Factory](#)

### **Oceanside**

[24 Hour Bagel](#)  
[Bonbino's Pizzeria](#)  
[Bagel Boss](#)  
[FRJ Donuts, Inc.](#)  
[Farmer Joel's](#)  
[JPaul's](#)  
[Lia's Pizzeria](#)  
[Mario's Bakery](#)  
[Oceanside Library](#)  
[Oceanside Kiwanis](#)  
[Oceanside School #5](#)  
[Pastosa Pasta](#)  
[Stonegate Real Estate](#)  
[Tazzetto](#)  
[Villa Formia](#)

### **Rockaway Beach**

[Madelaine Chocolate Company](#)

### **Rockville Centre**

[BareBurger](#)  
[Burgerology](#)  
[Blue Moon Pizza of RVC](#)  
[CJ's Diner of RVC](#)  
[Dirty Taco & Tegulia](#)  
[Front Street Bakery](#)  
[GM Construction Group](#)  
[Lenox and Park Italian Bistro](#)  
[Mesita](#)  
[Panera Bread](#)  
[Parlay](#)  
[Polka Dot Pound Cake](#)  
[Pretzel Stop of RVC](#)  
[Ralph's Ice](#)  
[Rock A Taco](#)  
[Rockville Bagels](#)  
[Rockville Links Club](#)  
[SoBol of Rockville Centre](#)  
[Sugar Berry Bakery](#)  
[Zora Halal Grill](#)

[Keyfood](#)  
[JJ Coopers](#)  
[Lido Kosher Deli](#)  
[Long Beach Social](#)  
[Mio Posto](#)

**Lawrence**  
[Traditions Eatery](#)

**Lynbrook**  
[Doughology](#)  
[F&L Deli](#)  
[Joey's Pizza](#)  
[Vincent's Pizzeria](#)

**Uniondale**  
[Harris Beach](#)

**West Hempstead**  
[Grapevine Events](#)

**Williston Park**  
[Berkshire Hathaway Laffey International](#)

**Woodmere**  
[Friendlier Restaurant and Pizzeria](#)

---

For the most up to date information about COVID-19, please visit the CDC website at: [www.cdc.gov/coronavirus](http://www.cdc.gov/coronavirus)

Mount Sinai South Nassau COVID-19 information is located at: [southnassau.org/covid19](http://southnassau.org/covid19)

Thank you for supporting Mount Sinai South Nassau. Be assured that we are monitoring the COVID-19 situation very closely and are prepared to meet the needs of the communities we serve.

---

Mount Sinai South Nassau | 516-632-3000